



6-MONTHS IMPACT REPORT

Reporting Period
January – June 2025

Date of Publication: July 2025



© Copyright SHF, 2025

All rights reserved. No part of this document may be reproduced or transmitted in any form or by any means, electronic or mechanical, including photocopying, recording or otherwise or stored in any retrieval system of any nature, without the written permission of the copyright holder.

**Address: Lome Crescent
Wuse, Zone 7
Abuja-FCT**

Website: www.safehaven-foundation.org

Email: info@safehaven-foundation.org

Emergency: 0911-001-9999

Enquires: 0911-022-9999

Instagram: @shf4survivors

Facebook: Safe Haven Foundation

Linkedin: Safe Haven Foundation-For Domestic Violence Survivors

The logo for the Safe Haven Foundation. It features the word "SAFE" in large, bold, black capital letters. Below it, the word "HAVEN" is written in the same style, but with a blue icon of two hands clasped together, forming a heart shape, in place of the letter 'V'. Below "HAVEN", the word "FOUNDATION" is written in a smaller, blue, sans-serif font. The entire logo is positioned on the right side of the page, with a large teal rectangular block to its left.

**SAFE
HAVEN**
FOUNDATION

Table of Contents

1

Executive
Summary

2

Message from
Founder/Team
Lead

3

About Safe Haven
Foundation

4

Key Achievements

5

Institutional Strengthening and
Staff Capacity Building

6

Partnership

7

Challenges &
Lessons Learned

8

Financial
Snapshot

9

Social Media &
Digital Reach

10

Survivor Story

11

Looking Ahead: Next 6 Months

12

Acknowledgments

13

Safe Haven Foundation
Team

Executive Summary

1

Between January and June 2025, Safe Haven Foundation (SHF) continued to deliver survivor-centered services to individuals affected by domestic and sexual violence. Over the past six months, SHF received 27 complaints and requests through various channels, including email, phone, WhatsApp, and Instagram. SHF provided comprehensive protection and support to 19 survivors, including emergency shelter, psychosocial care, legal aid, medical and reintegration support.

Summary Analysis

Total Complaints Received: 27

Gender Breakdown: {'F': 25, 'M': 2}

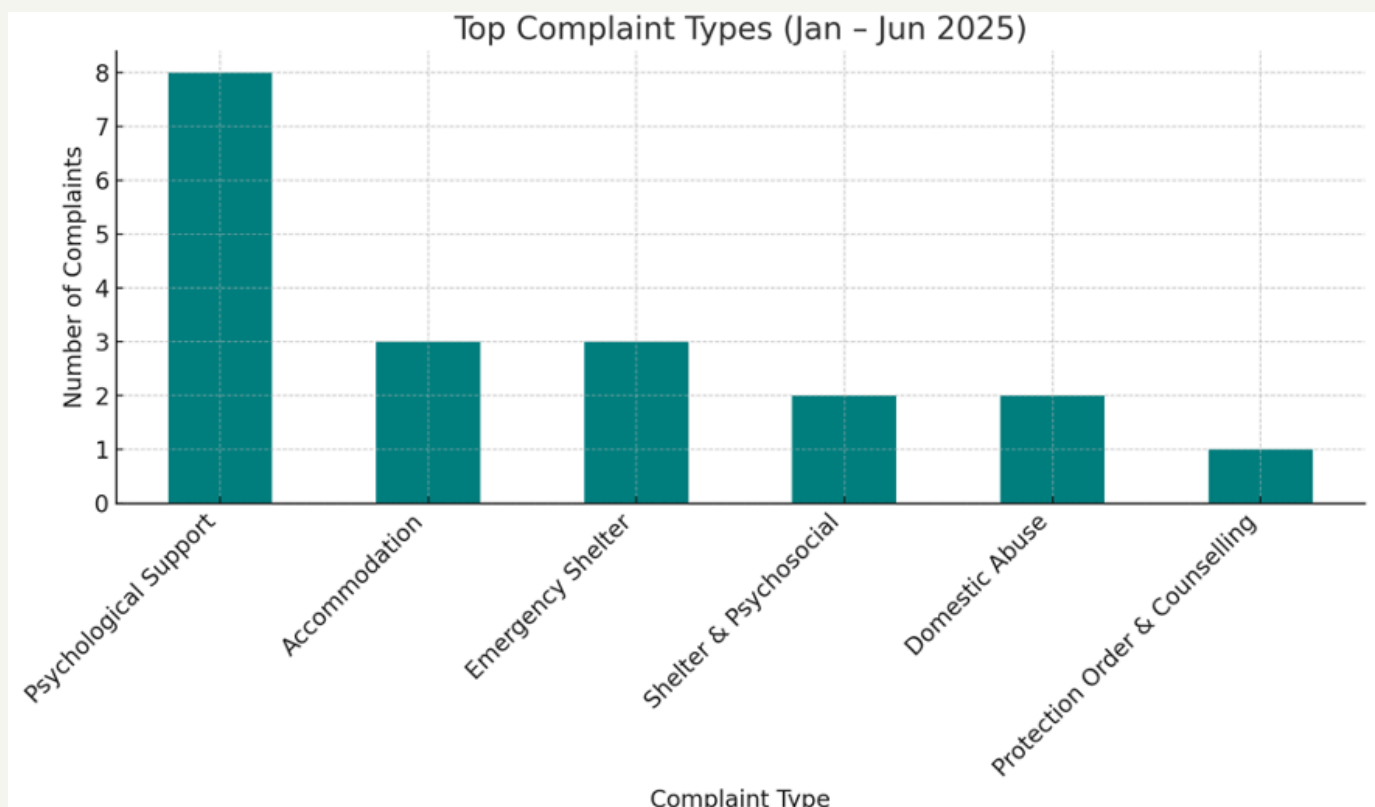
Disability Status Breakdown: {'N/A': 14, 'No': 13}

Top Complaint/Request Types:

- Psychological Support
- Accommodation
- Emergency Shelter
- Domestic Abuse

Methods Used to Submit Complaints:

- WhatsApp: 10
- Email: 7
- Email and Phone: 3
- Instagram: 3
- Phone: 2
- Referral Letter: 2



Besides our direct services, SHF:

- Expanded its digital footprint, resulting in a 30% increase in online engagement, helping more survivors and allies find us and access timely support.
- Piloted a new internship program for students from the age of 15-18 years old.
- Launched its online publication series call Safe Haven Review: Voices Against GBV.
- Piloted its Policy Review Series.
- Signed a Memorandum of Understanding with The Smile Outreach Africa (TSO) and Babangida & Ibrahim Saleh Foundation (BISH).

The unwavering dedication of our staff and volunteers, strategic partnerships, and the resilience of survivors who daily choose life and healing made these achievements possible.

As we reflect on this period, SHF remains clear-eyed about the challenges ahead, rising reports of intimate partner violence, emotional and psychological abuse, limited funding for shelters, and institutional gaps in protection. Still, we move forward with resolve. The next six months will focus on expanding our reach, deepening survivor impact, and strengthening collaboration with state actors to ensure that safety, justice, and dignity are not the exception but the norm.

Message from the Founder/Team Lead 2



Dear Friends, Partners, and Advocates,

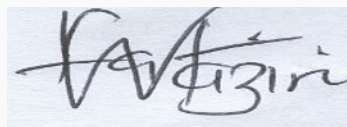
Since the re-launch of Safe Haven Foundation (SHF) and Shelter in December 2024, the last six months have been a journey of purpose, persistence, and profound transformation. Every survivor who walks through our doors carries a story often one of unimaginable pain, betrayal, and loss.

But at SHF, we don't just listen to these stories, we respond. We create space for healing, offer tools for justice, and walk alongside survivors as they reclaim power over their lives. From emergency shelter and psychosocial care to legal representation and community outreach, our work has touched lives, shifted narratives, and challenged broken systems.

This report reflects not only numbers and activities, it tells a story of collective impact. It speaks of staff who show up daily with heart and professionalism, of partners who invest in our mission, and of survivors who rise, again and again, with courage that humbles us.

As we look to the next half of the year, our focus remains clear: to strengthen systems, expand our reach, and deepen the impact of our work. We know that the road to safety and dignity is not linear, but we are committed to walking that road; one survivor, one intervention, and one breakthrough at a time.

Thank you for standing with us.

A handwritten signature in black ink, appearing to read 'Fatima Waziri-Azi', on a light blue background.

Professor Fatima Waziri-Azi, PhD
Founder/ Team Lead

About Safe Haven Foundation

3

Safe Haven Foundation (SHF) is a survivor-centered, trauma-informed, and rights-based non-profit organization committed to preventing and responding to sexual and gender-based violence (SGBV) in Nigeria. Founded with a clear mission to build a society where all individuals, especially women, girls, and vulnerable persons live free from violence, SHF provides critical and holistic support services that promote healing, justice, and empowerment.

Mission

To prevent domestic violence and sexual abuse through strategic legal interventions, research-driven advocacy and support to survivors and offenders.

Vision

Together against violence, together for hope.

Core Values

Compassion-We prioritize empathy and kindness in every interaction, ensuring that survivors feel valued, supported, and understood.

Integrity-We uphold the highest ethical standards in our services, ensuring transparency, honesty, and trustworthiness.

Inclusivity- We believe in the dignity and worth of every individual, providing services that respect and embrace diversity without discrimination.

Safety- We provide a secure and peaceful environment where survivors can begin their journey to healing without fear.

Organizational Overview

Safe Haven Foundation operates through four main arms:

Shelter & Psychosocial Support

We provide survivors of domestic and sexual violence with immediate safe shelter, basic necessities, medical care, and trauma-informed counseling. Every survivor is welcomed into a space of dignity, protection, and emotional healing.

Advocacy & Public Engagement

We drive national conversations, challenge harmful norms, and push for systemic change through targeted advocacy, awareness campaigns, and community outreach ensuring SGBV is not just addressed, but prevented.

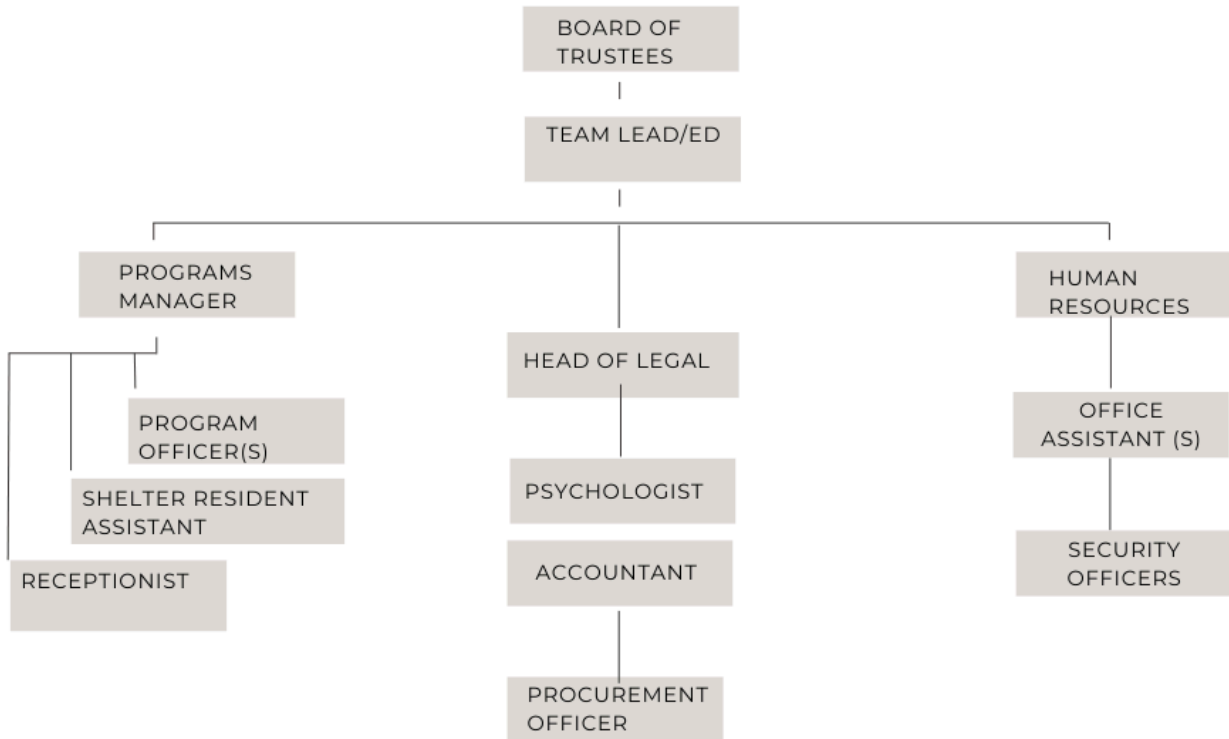
Legal Empowerment & Access to Justice

Survivors receive free legal support, including representation in civil matters such as protection orders, custody disputes, and divorce proceedings. We stand by survivors in court and beyond, ensuring their voices are heard and rights upheld.

Evidence-Based Research & Policy Reform

We generate cutting-edge research on domestic violence, sexual abuse, and intersecting vulnerabilities providing data-driven insights that shape laws, inform policies, and guide institutional reforms across Nigeria.

ORGANIZATIONAL CHART



WHAT WE DO



LEGAL ASSISTANCE
FOR CIVIL CASES



PSYCHOSOCIAL
CARE



EMERGENCY
SHELTERING



ADVOCACY



RESEARCH &
PUBLICATION

@SHF4SURVIVORS

EXPLANATORY NOTE HOW WE WORK



**FREE EMERGENCY
SHELTERING**

Admission into our shelter is based on **only referrals from government institutions.**

We do not admit on self referral.



**FREE PSYCHOSOCIAL
CARE**

Access to our in-house clinical psychologists is based on **referrals from other organizations and self referral.**



**FREE LEGAL ADVISE &
REPRESENTATION**

We only handle civil matters like protection orders, compensation, divorce & custody issues. **Representation is based on referrals & self referrals**

Key Achievements

4

Key accomplishments include:

- Provision of round-the-clock shelter services in a secure and confidential environment.
- Access to basic needs including food, clothing, hygiene supplies, and medical care
- Facilitation of scholarship for one survivor to complete senior secondary school and to any public university of her choice.
- Securing paid accommodation for one survivor.
- Facilitated the return of non-Nigerian survivor to her home country in collaboration with the Zambian High Commission in Abuja.

Shelter Services at a Glance

Total Survivors Sheltered: 4 survivors provided safe, confidential accommodation and holistic care.

Duration of Stay:

- 2 survivors stayed for 6 weeks
- 2 survivors stayed for 4 weeks.

Referral Sources

- 2 survivors were referred by the Federal Ministry of Women Affairs
- 2 survivors were referred by Global Rights
- Other referrals received through SHF direct reporting channel

1

Emergency Shelter

During the reporting period, Safe Haven Foundation provided emergency shelter services to four female survivors of domestic and sexual violence; three Nigerians and one non-Nigerian

Age Breakdown:

Age Group	No. of Survivors
Under 18.	1 (age 12)
Ages 18–30.	2 (ages 22, 25)
Over 30.	1 (age 35)

Nature of Violence Experienced:

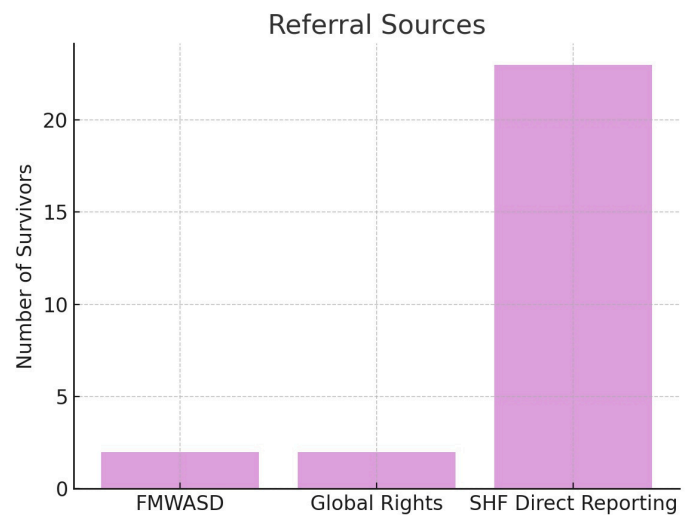
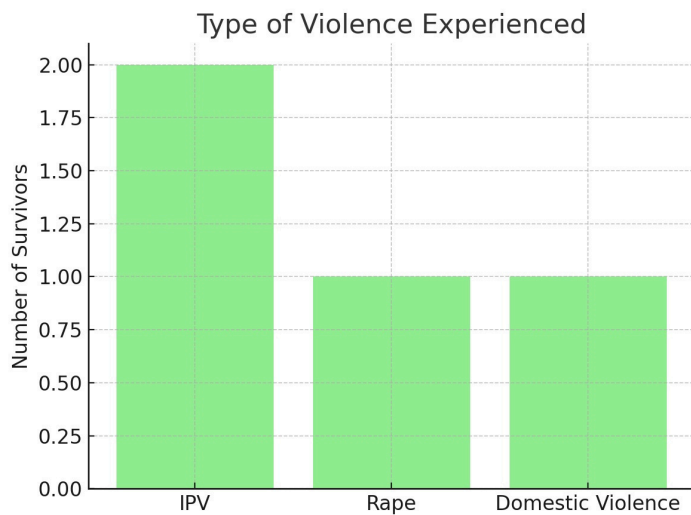
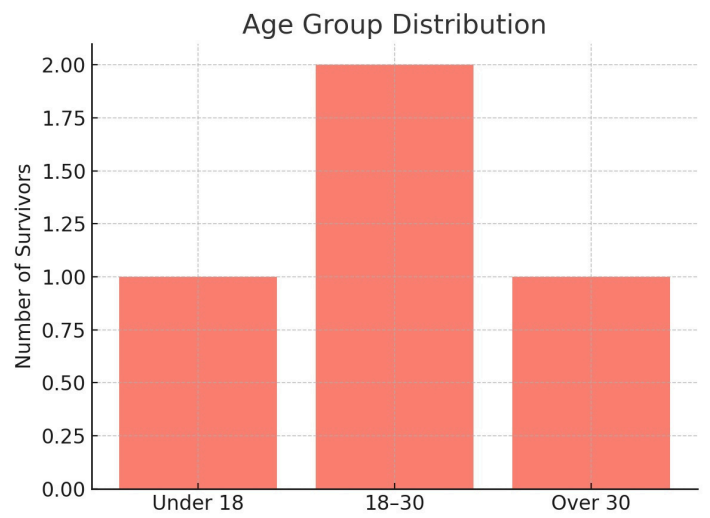
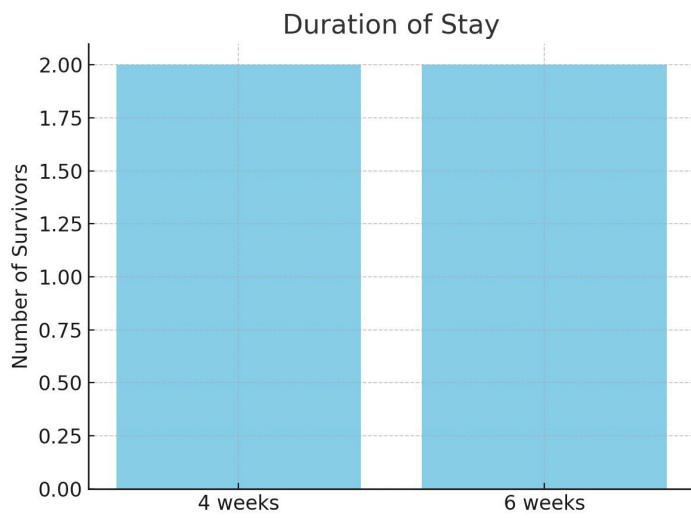
Type of Abuse Survivors

Intimate Partner Violence	2
Rape	1
Domestic Violence (non-IPV)	1

Protection Provided:

- Immediate safe housing
- Meals, clothing, and hygiene supplies
- Medical care and trauma counseling
- Reintegration support

Shelter Services at a Glance (Jan - Jun 2025)



3

Legal Advice and Assistance

Recognizing access to justice as a cornerstone of survivor empowerment, SHF provided legal support to survivors navigating the criminal justice system.

Key results:

- Offered legal advice to 2 survivors over divorce matters
- Offered legal representation to 2 survivors at police interviews.

4

Research and Publication

SHF continued to contribute to evidence-based advocacy through research and strategic publications that shape legal and policy discourse.

Milestones:

Launched its online publication series call Safe Haven Review: Voices Against GBV. Safe Haven Review has published 3 articles so far

2

Psychosocial Support

SHF ensured that all survivors in shelter and other external survivors received trauma-informed, survivor-centered psychosocial care, critical to recovery, and long-term healing.

Highlights:

- Delivered 14 survivors assisted one-on-one trauma counseling sessions facilitated by SHF in-house clinical psychologist. All survivor had between 3-5 one-on-one sessions.
- Introduced healing-centered activities such as journaling and storytelling circles (for survivors' resident at the shelter).

- **Review No. 1:** The Role of Bystander Intervention in Domestic Violence Situations.
- **Review No 2:** Breaking the Culture of Silence – Men as Victims of Domestic and Sexual Violence.
- **Review No 3:** The Impact of Social media on Reporting Domestic Violence: Legal Perspectives, Benefits and Challenges

Piloted its Policy Review Series.

- **Policy Brief No.1:** Leveraging the AU Convention on Ending Violence Against Women and Girls (CEVAWG) to Strengthen Nigeria's Response to Gender-Based Violence.

5

Advocacy

Curated an internship program for students from the age of 15-18 years old and Legal Internship for fresh law graduate.

The first stream for 1 legal intern held from February 4th 2025 to April 3rd, 2025. While the first stream for 2 secondary school interns held from June 24, 2025- July 09,2025.

Institutional Strengthening and Staff Capacity Building

5

As the demand for SHF services continues to grow, we recognize that a strong institution and a well-supported team are critical to sustaining impact and improving service delivery.

Strengthening Our Systems

Over the past six months, SHF took deliberate steps to improve its internal structures, streamline service delivery, and lay the foundation for long-term growth. We have developed the following tools and policies:

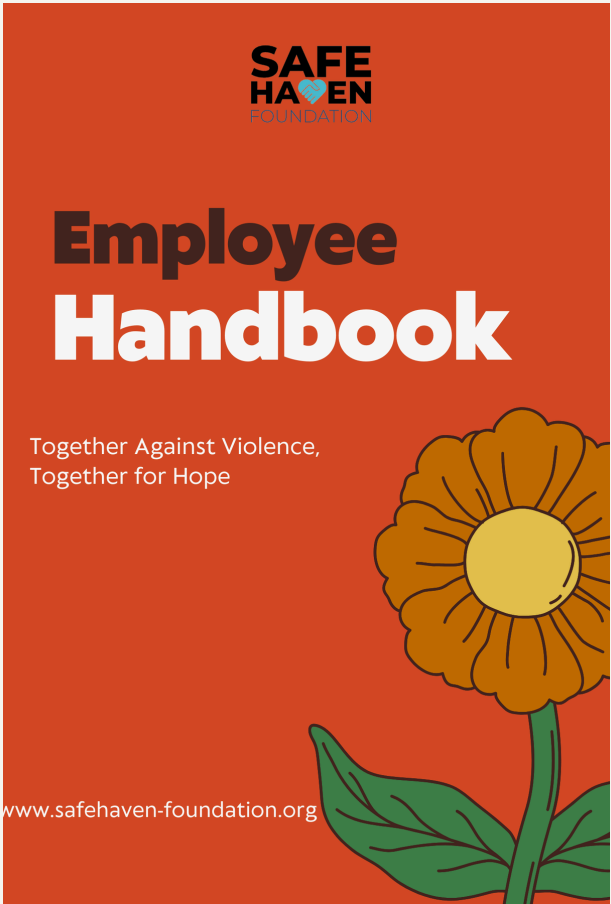
- Standardized Case Management Tools comprising survivor intake forms, referral logs, exit forms, referral directory for survivors in the FCT and shelter case documentation tools to improve consistency, accountability, and data tracking.
- Operational Policies and Guidelines
- Organizational Policies and Procedures Manual
- Human Resources (HR) Manual
- Financial Policies and Procedures Manual
- Volunteer Handbook
- Safety and Emergency Procedures Manual
- Data Protection and Privacy Guidelines
- Media and Communication Policy
- Partnership and Collaboration Guidelines
- Shelter Operations Manual
- Employee Handbook
- Protection from Sexual Exploitation and Abuse (PSEA) Policy.
- Strategic Plan (2025-2028)
- Referral Directory
- Internship Welcome Pack

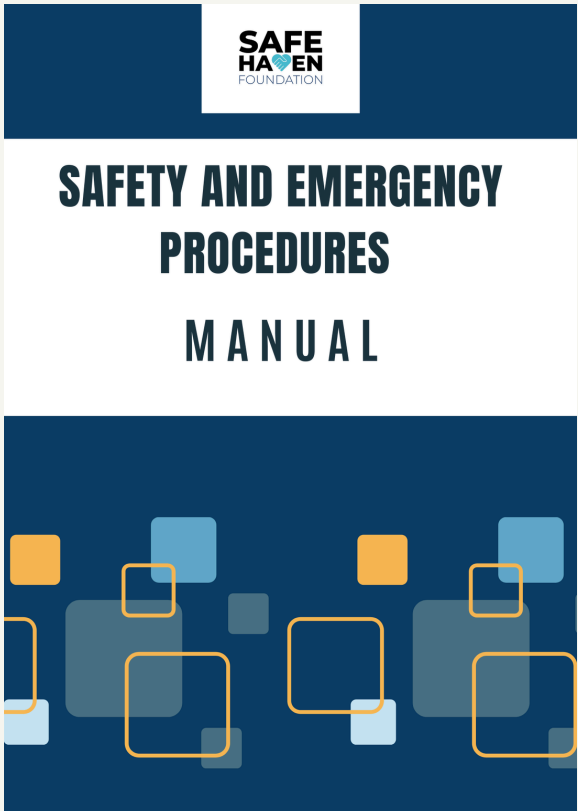
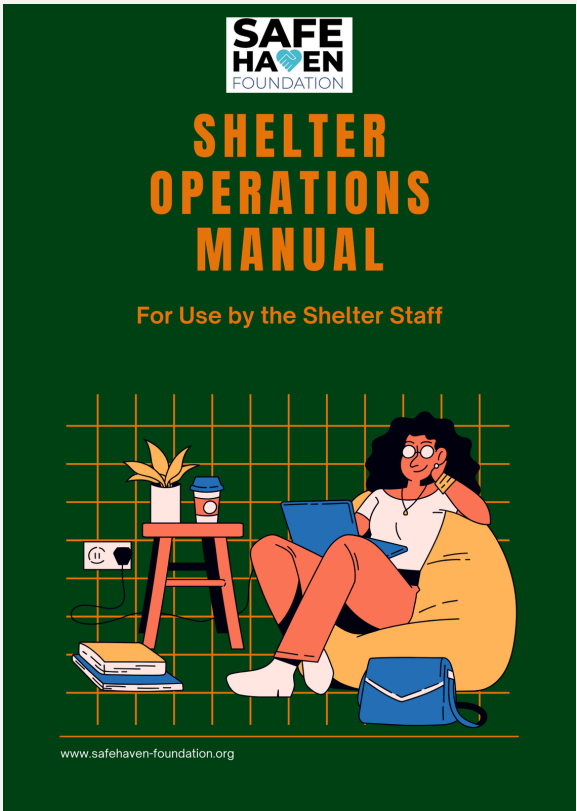
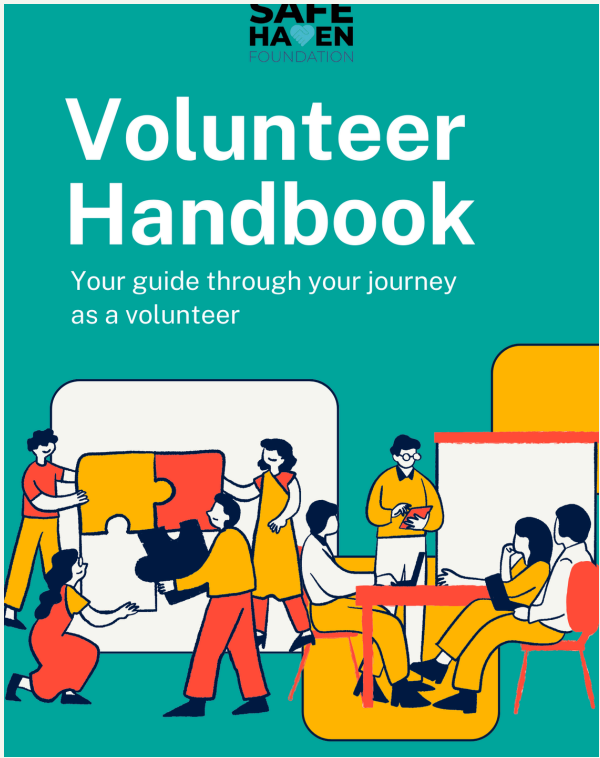
Staff Capacity Building

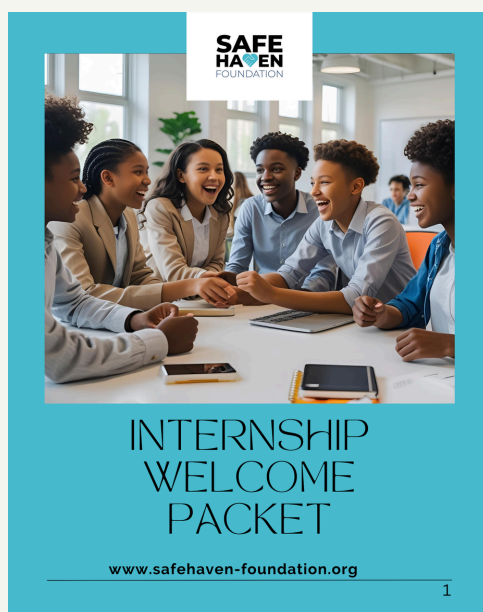
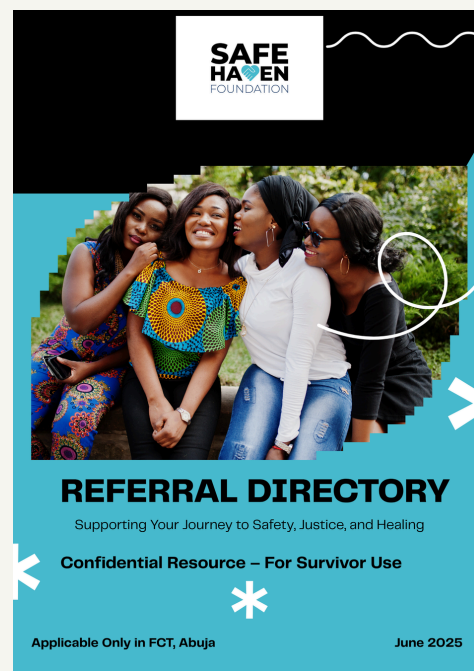
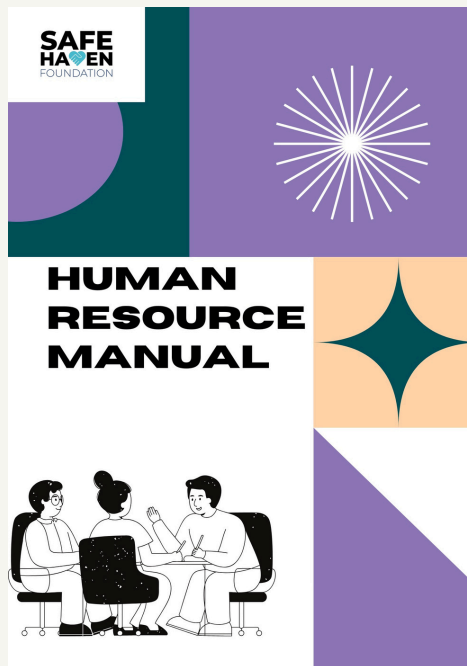
Our team is our greatest asset. During this period, we invested in building the skills and emotional resilience of our staff and volunteers to ensure safe, trauma-informed, and survivor-centered care.

Training Highlights:

- Conducted internal training sessions on foundational on SGBV
- Onboarded new shelter staff and volunteers with a structured induction and mentorship process.
- Mandatory online course on Prevention of sexual exploitation and abuse (PSEA) by UNICEF
- Training in SGBV Trauma Counselling for Counsellors and Social Workers in the FCT. Organized by EU Funded ROLAC II Programme, implemented by International IDEA (May 13 & 14, 2025)







Partnership

6

At Safe Haven Foundation, we believe that transforming the landscape of SGBV prevention and survivor support requires more than passion; it requires partnership. Collaboration is at the heart of everything we do, and the progress recorded in the last six months is a direct result of relationships built on shared values, mutual respect, and collective purpose.

During the reporting period, SHF engaged in impactful partnerships that strengthened service delivery and advocacy:

Federal Ministry of Women Affairs	Collaborated on emergency shelter referrals reinforcing our shared commitment to protecting vulnerable women and girls.
NGO Networks and Peer Organizations	<ul style="list-style-type: none">• Signed a Memorandum of Understanding (MoU) with The Smile Outreach Africa (TSO) to formalize collaboration on survivor support and community outreach initiatives.• Signed a Memorandum of Understanding with Babangida & Ibrahim Saleh Foundation (BISH) for educational empowerment• SHF and Tabitha Empowerment Centre are developing a joint partnership aimed at supporting adolescent girls in underserved urban communities across the Federal Capital Territory.• SHF and AUXANO Foundation are actively collaborating on joint advocacy efforts to raise awareness and drive policy change on SGBV.

Looking ahead, SHF is actively seeking new partnerships to expand the scale and sustainability of our work. Priority areas include:

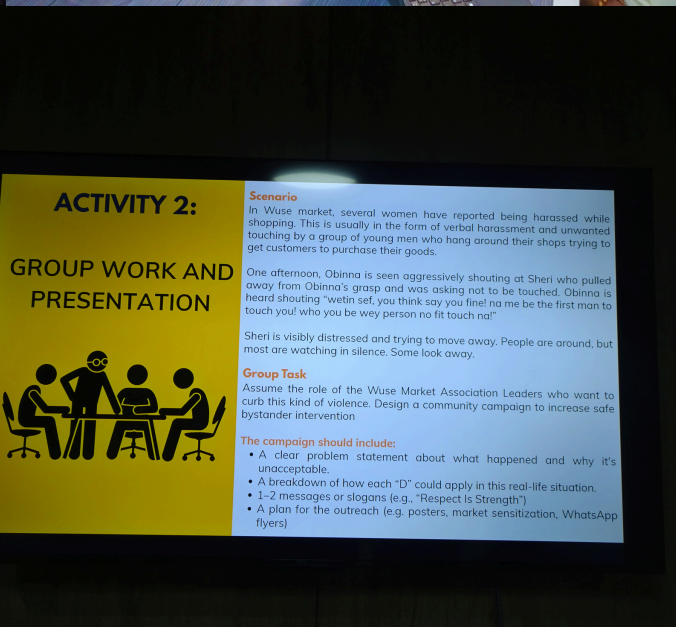
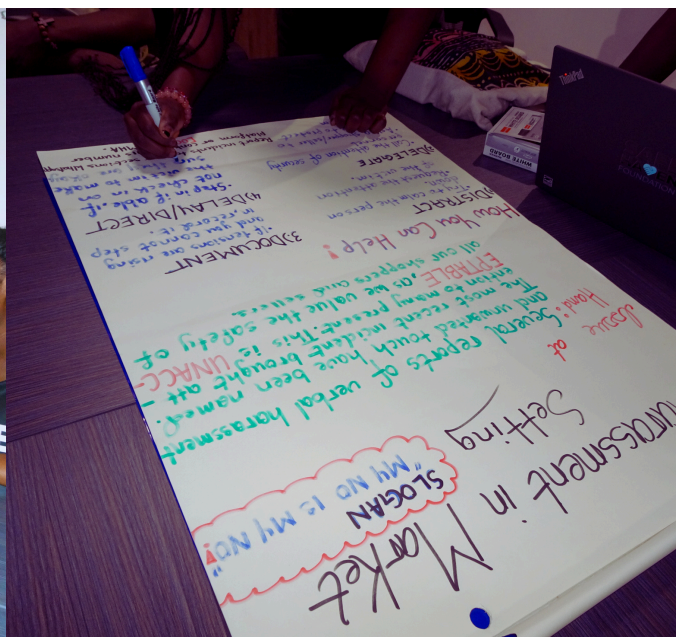
- Core and Project Funding Partnerships with donor agencies, foundations, and philanthropic institutions.
- Academic and Research Collaborations for evidence based research and policy reform.
- Private Sector Engagement to support survivor reintegration, skills acquisition, and workplace safety.
- Community-Based Organization Alliances to extend outreach and build grassroots prevention models

To our existing partners, thank you for walking this path with us. To those we are yet to meet, we invite you to join us. Whether through funding, technical support, training, or visibility, your partnership can help us reach more survivors, change more lives, and build a safer, more just society for all.





SHF Interns in Action



Challenges & Lessons Learned

7

1

Limited Shelter in the FCT

As demand for emergency shelter continues to rise, SHF faced challenges in referring survivors who either did not meet existing policy criteria or required extended stays to alternative organizations.

We received several accommodation-related requests from vulnerable individuals who were not necessarily survivors of SGBV, underscoring the urgent need for a dedicated transit home to serve this broader at-risk population.

3

Resource Constraints

Inconsistent funding affected our ability to scale certain services like expanded reintegration packages for survivors post-shelter. A lot of survivors require long-term economic empowerment and financial support.

Lessons Learned

- **Partnerships are Crucial:** Our collaboration with the Federal Ministry of Women Affairs and other non-profit organizations reinforced the importance of multi-sectoral partnerships in survivor referral, support, and advocacy.
- **Flexibility Saves Lives:** Being able to adapt quickly whether to accommodate a sudden referral or to provide emergency transportation was critical to protecting survivors in crisis.
- **Legal Empowerment Must Start Early:** Providing survivors with legal literacy at the point of intake helped reduce confusion, anxiety, and disengagement from justice processes down the line.
- **Documentation Enhances Accountability:** Improved data tracking and structured case documentation enabled SHF to strengthen internal systems, report impact more accurately, and build credibility with stakeholders.

2

Delayed Justice Process

Survivors seeking justice often encountered bureaucratic delays in initiating investigative processes. Despite timely referral, actions are usually not carried out promptly.

Financial Snapshot

8

During the reporting period, Safe Haven Foundation (SHF) operated entirely without donor funding.

All programs, interventions, and shelter operations were sustained through the unwavering generosity of family, friends, and private well-wishers who believe in our mission and stand with us in the fight against SGBV.

Despite financial constraints, SHF remained committed to delivering quality, survivor-centered services. Strategic prioritization, prudent resource management, and the dedication of our team made it possible to continue providing emergency shelter, legal support, psychosocial care, and public outreach.

Primary Funding Source

Individual contributions from personal networks and family trust.

Top Expense Areas

- Core staff salaries
- Operational running cost
- Emergency shelter upkeep (food, utilities, medical tests, hospital visits and basic supplies)
- Survivor welfare (transport, paid accommodation)

What This Means

Our progress so far reflects the power of community-led impact. However, to scale our services, deepen our reach, and ensure sustainability, SHF urgently requires core institutional support and donor investment. By investing in SHF, you are not just funding services; you are creating safety, dignity, and justice for survivors who would otherwise have nowhere to turn. We are actively seeking donors and partners who share our vision of a Nigeria free from SGBV. Whether through core funding, project grants, or in-kind support, your partnership can help us reach more lives and protect the most vulnerable among us.

Social Media & Digital Reach 9

Organic Growth & Engagement

In today's digital age, SHF recognizes the power of social media and digital platforms as tools for advocacy, survivor outreach, public education, and visibility. Over the past six months, SHF has made deliberate efforts to enhance its online presence and amplify the voices of survivors through compelling, values-driven content.

Instagram

- Gained 98 followers
- Published 118 posts, including educational carousels, reels, safety tips and survivor stories.

LinkedIn

- Gained 123 followers
- Published 118 posts, including educational carousels, reels, safety tips and survivor stories.

Website

- Launched new blog section featuring educational articles and survivor-centered content
- Improved SEO and mobile responsiveness

Key Digital Campaigns

- What Happened to You is Not Your Fault
- SGBV Q&A Series
- Launched a short-form educational series answering common questions about the VAPP Act and survivor rights.
- Used national and international observances to drive attention to structural gaps in survivor support and gender justice.

10

Survivors Story

At the heart of Safe Haven Foundation's work are the lived experiences of survivors who show extraordinary resilience in the face of unimaginable trauma. This short video features the story of one such survivor; a young woman who escaped life-threatening violence and found refuge, and healing through our shelter services. Her journey reflects the power of timely intervention, survivor-centered care, and the importance of safe spaces. With her consent, we share this story as a testament to why our work matters and as a reminder of the courage it takes to begin again.

Click [link](#) to watch survivor story on LinkedIn

Click [link](#) to watch survivor story on Instagram



11 Looking Ahead-Next 6 Months

As we move into the second half of the year, SHF is focused on deepening impact, strengthening systems, and expanding the scope of our survivor-centered work. Building on the momentum of the past six months, our priorities are clear and driven by need, data, and the voices of those we serve.

Every decision we take over the next six months will center one goal: ensuring that no survivor is turned away, unheard, or unsupported. We are committed to being a safe, responsive, and resilient force in the fight against domestic and sexual violence in Nigeria.

Acknowledgements 12

At Safe Haven Foundation, our journey over the past six months has been one of compassion, and transformation. None of this would have been possible without the unwavering support of individuals and allies who stood with us and for survivors.

We extend our deepest gratitude to the families, friends, and well-wishers who believe in our vision and opened their hearts and their resources to sustain our work- **FMWASD, EU-RoLAC, Zambian High Commission in Abuja, Auxano Foundation, Patrick Nnamdi Azi, Aneesa Saleh, Bushra Ehikhamenor, Toyosi Onaolapo, Lanre Shashore, Olufunso Owasanoye, Chika Ikejiaku, Ronny Saether and Leandra Orquidea, Nelson Ovoro, Tolani Alli, Ola White, Juliet Rufai, Andrew Madaki.**

To our staff and volunteers, thank you for showing up every day with empathy, professionalism, and resilience. Your commitment to justice and healing gives meaning to everything we do. We also acknowledge our community partners who continue to walk this path with us, referring survivors, sharing knowledge, and amplifying our mission. Last, to the survivors who trust us with their stories, your strength is the heart of Safe Haven Foundation.



SHF Team



Prof. Fatima Waziri-Azi, Ph.D
Founder/Team Lead



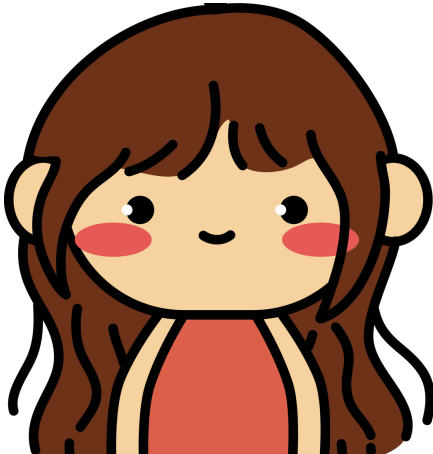
Gary Kelechi Amadi, Esq.
Head of Legal



Murjanatu Audu-Kamaldeen, Esq.
Head of Programs



Zainab Saleh
Clinical Psychologist



Mary James
Shelter Resident Assistant



Shalom Francis
Office Assistant



Get in touch with us



WWW.SAFEHAVEN-
FOUNDATION.ORG



INFO@SAFEHAVEN-
FOUNDATION.ORG



WUSE ZONE 7, FCT, ABUJA,
NG



0911-022-9999/ 0911-001-9999
Enquiries Emergency



@SHF4SURVIVORS



Opening hours
10:00am - 5:00pm